

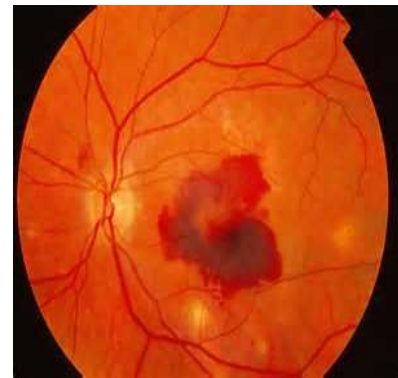
The Quick Summary

You have macular degeneration, and you need injections to try to improve it. The injections won't fix everything. You also need eye vitamins. Check your vision one eye at a time at least once a week to see if either eye is getting worse.

Wet Macular Degeneration

Dr. Shalwala has determined that you have wet age-related macular degeneration (AMD). Macular degeneration is a disease of the retina, which is the "film" in the back of the "camera of the eye." The macula is the center of the retina and where the center of vision is processed.

In all patients with AMD, deposits (drusen) form behind the retina. These drusen are markers of problems in the nearby retina, and eventually the retina can totally die ("atrophy") in AMD. It is not well known what causes AMD in some patients and not in others, though there are some known risk factors like family history and smoking. The biggest risk factor of all is age, as the disease is extremely uncommon in people under the age of 40.



If drusen and atrophy are the only problems in AMD, we call the disease dry AMD. However, AMD patients can develop a leaky blood vessel under the retina. These types of blood vessels are not normally found in the eye, and the leaky blood vessel can either leak red blood or non-bloody fluid into the eye. Blood and fluid disturb the normal architecture of the retina, which make it hard to see for the patient. Since blood and fluid are the hallmarks of the disease, this type of AMD is called wet AMD (which is stacked on top of the dry AMD that you have as well).

In order to treat wet AMD, we do injections in the eyeball in an attempt to dry up the fluid. It is important to know that the injections will not totally fix the AMD because the dry AMD will still be there. The injections can only treat the wet component of the AMD.

How many injections will you need? We don't know. Dr. Shalwala will often give injections in series of three (e.g. three injections one month apart) and then re-assess for the need for further injections. If you have a new diagnosis of wet AMD, three injections one month apart is likely only the start of your injections. You will need many more. Even if Dr. Shalwala stops your injections, we will keep monitoring you to make sure that you don't need to restart injections.

Visit the website below for more information or contact us today!

<http://ajayshalwalamd.com/>

DOVER
833 S. Governors Ave
Dover, DE 19904
(302) 674-1121
(302) 674-3891

NEWARK
333 E. Main St.
Newark, DE 19711
(302) 368-9105
(302) 369-6563

DOVER-RUDNICK
16 Old Rudnick Ln.
Dover, DE 19901
(302) 734-1760
(302) 734-1720

MILFORD
110 N E Front Street
Milford, DE 19963
(302) 422-5155
(302) 422-5118

SMYRNA
100 S Main St. Ste. 217
Smyrna, DE 19977
(302) 653-9200
(302) 653-9366

BEAR
1721 Pulaski Hwy
Bear, DE 19701
(302) 836-5410
(302) 836-5477